

SUBDIVISION PLAN OF LOT 22 SECTION 24 TOWNSHIP 28 SIMILKAMEEN DIVISION
 YALE DISTRICT PLAN EPP97496

BCGS 82E.073



The intended plot size of this plan is 550mm in width by 432mm in height (C size) when plotted at a scale of 1:200.

This Plan lies within Integrated Survey Area No. 4, City of Kelowna, NAD83 (CSRS) 4.0.0.BC.1.

Grid bearings are derived from differential GNSS observations and are referred to the central meridian of UTM Zone 11.

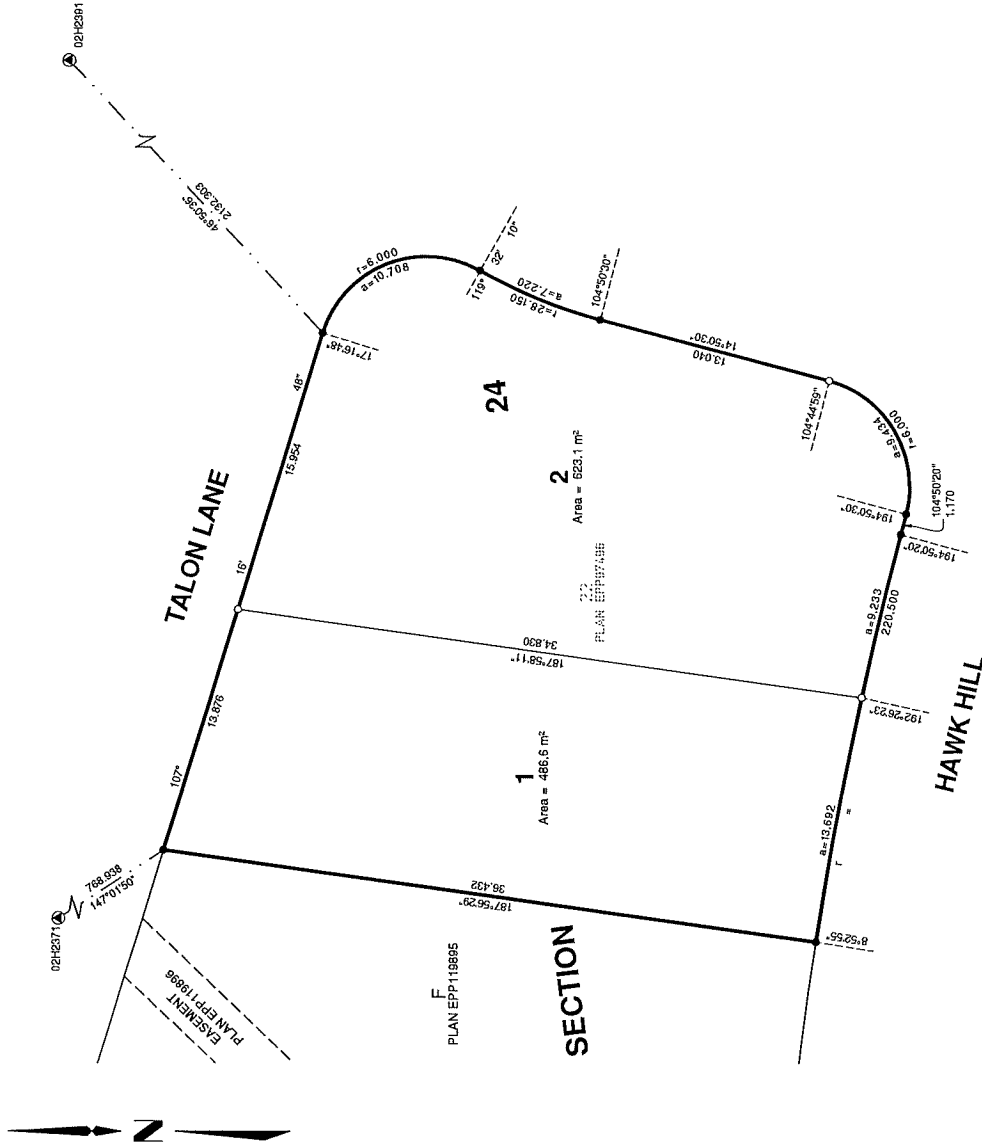
The UTM coordinates and estimated absolute accuracy achieved are derived from MASCO T published coordinates and standard deviations for geodetic control monuments 02H2371 and 02H2391.

This plan shows horizontal ground level distances, unless otherwise specified. To compute grid distances, multiply ground level distances by the average combined factor of 0.9999100. The average combined factor has been determined based on an ellipsoidal distortion of 524 metres.

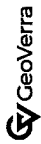
LEGEND

- denotes control monument found
- denotes standard from post found
- denotes standard from post placed
- m2 denotes metres squared

Point	UTM Northing	UTM Easting	UTM Zone 11 North	Absolute Accuracy
02H2371	5518800.828	319341.886	0.02	0.02
02H2391	5519874.272	321344.153	0.02	0.02



This plan lies within the Jurisdiction of the Approving Officer for the City of Kelowna
 This plan lies within the Regional District of Central Okanagan
 The field survey represented by this plan was completed on the 2nd day of November, 2022.
 G.M. Hobbs, BCLS 752



202 - 1475 Ellis Street
 Kelowna, BC

PROJECT REF./DRAWING No.
 20-W0818-003-SUB01